



Small Wonder

Cozy room scale,
clever storage features,
and a fresh twist on classic
style make the most of a
750-square-foot home.



BY SHAWN GILLIAM
PHOTOGRAPHS BY KIM CORNELISON
STYLING BY DAVID ANGER

Character fills every nook and cranny in the small East Harriet condo that photographer Kim Cornelison shares with her husband, photo studio manager and photo tech Alfie Ferreyra. "It's easier to decorate to the full extent because you can afford to," Cornelison says. "The rooms can be perfect, and you pare everything down to what you really love."

The couple also enjoy spending time skiing around the Minneapolis Chain of Lakes in the winter and cycling or taking their Stella scooter to Minnehaha Falls come summer. "Plus, we travel a lot," Cornelison says, "so when we're here, we want to enjoy what Minneapolis has to offer. We even have a community garden between our buildings. Cleaning and upkeep is so much easier when you only have 750 square feet."

Much of the character comes thanks to the cozy quality of the space. The couple purchased the condo as it was being converted from a rental apartment, intervening just before walls would have been removed to create an open entry/living room/kitchen floor plan. "We wanted to keep the small entryway because it creates privacy between the kitchen and living room," Cornelison says. "Some people say it makes it feel smaller, but I think it makes it feel bigger."

Walter, Kim Cornelison and Alfie Ferreyra's Tibetan terrier, peeks into the small entry, which has just enough room for a chest of drawers. The wallpaper is from Farrow & Ball, the overhead light fixture from Artemide at International Market Square.





OPPOSITE: One side of the living room features a comfortable conversation area. "We loved the shape of the chairs and the fabric," Cornelison says, "so everything revolves around them." The brown West Elm rug, which complements the brown backs of the built-in shelves, introduces a subtle Moroccan pattern. THIS PAGE: Ferreyra's desk backs into one corner of the living room. He designed the bulletin board using a vintage frame and two layers of cork tile (thick enough for pushpins) glued to a wood backing. Boxes and baskets in the bookcases behind the desk store office supplies.



“Despite its size, the kitchen functions just as well as any larger one we’ve had.”

OPPOSITE: Utensils hang from a framed pegboard designed by friend and stylist David Anger, who was inspired by a similar element in Julia Child’s kitchen that is now on display at the National Museum of American History in Washington, D.C. “We’ve worked as a photographer/stylist team on a lot of projects, so David had a lot of influence and helpful suggestions for us.” **THIS PAGE:** Concrete tiles by Imports from Marrakesh and cabinet shelves painted blue add color to the otherwise white kitchen. The tiny table lamp is a vintage find from Hunt & Gather.

Previous experience renovating a historical home and finding examples of features they liked in books and magazines made the couple feel comfortable tackling the job. “We wanted everything to look like it may have been built that way in the 1920s,” Ferreyra says. The couple also renovated the kitchen their way, boosting convenience while preserving charm. Ferreyra came up with a cabinet design that replaced low, shallow base cabinets with taller units. “We kept the look, but created the proper height and depth so we could incorporate the appliances and more comfortably use the countertops,” he says. Ferreyra then removed, stripped, and repainted the glass-door upper cabinets before hanging

them several inches higher. An apron-front sink and small-scale appliances (a professional-style FiveStar gas range, a cabinet-front Liebherr refrigerator, and a Miele dishwasher) blend into the design. An island base and a cut-to-fit butcher-block countertop, both purchased at Ikea, provide additional food-prep space and a spot to set dishes. “Despite its size, the kitchen functions just as well as any larger one we’ve had,” Ferreyra says. Ferreyra’s cabinet design work extended to the living room, where he drew up plans for built-in bookcases tailored to fit the space. “Most people walk in and think they’re original,” Cornelison says. “But this had always been a plain, square room.”

Ferreyra built the units out of MDF, topped them with crown molding (an exact match of the room’s existing crown trim purchased at the The ReUse Center in Minneapolis for \$5), and incorporated wiring for new library light fixtures. The bookcases were painted the same white as the walls and trim, but their backs, painted brown, make the books and accessories on the shelves stand out. A window seat/ledge concealing a radiator fits between the bookcases. “The radiator took up so much space,” Ferreyra says. “But now we can utilize the area and actually treat it as a design element.” Vintage-style metal grates, purchased at Lowe’s and painted brown, fill the wood frame.

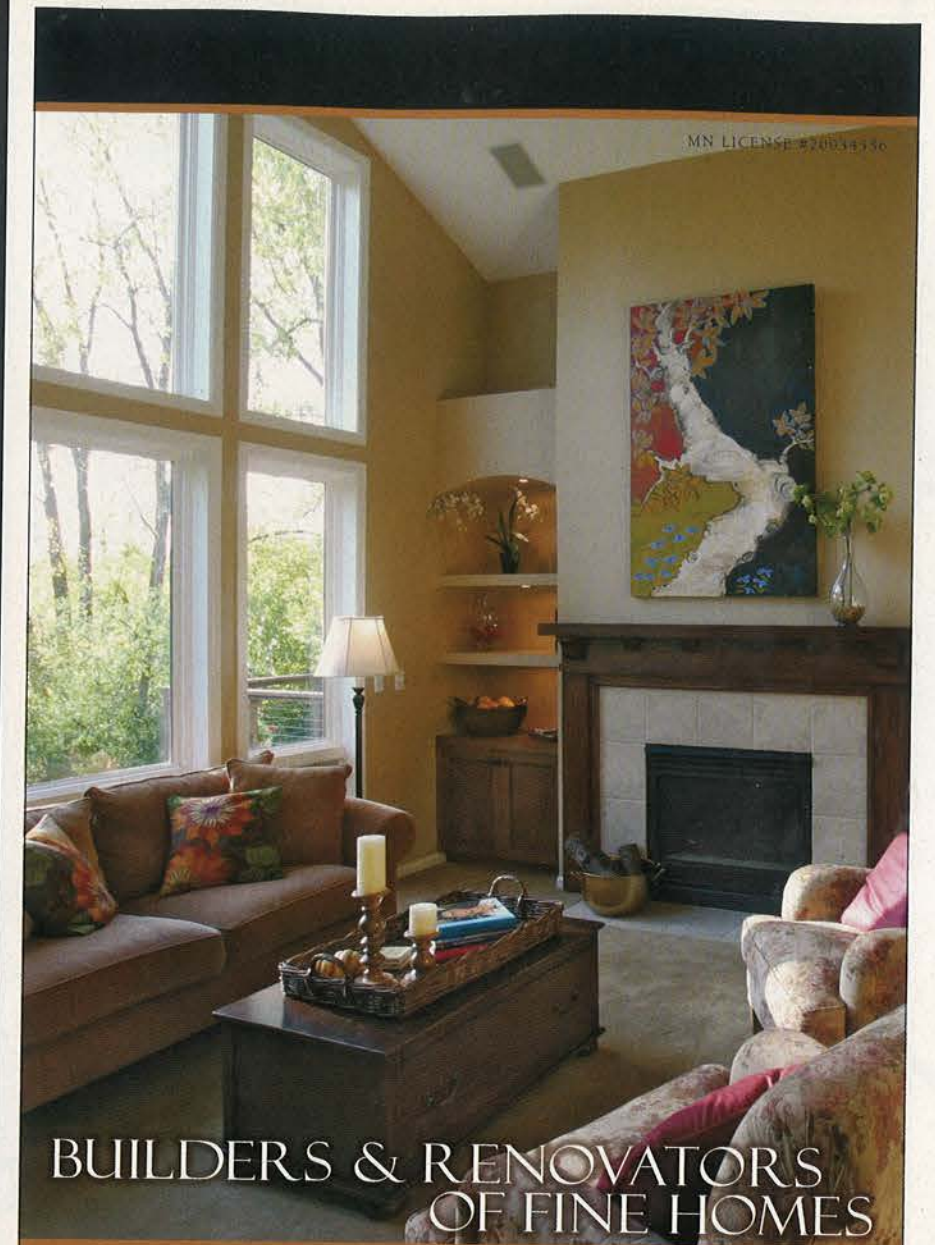


Color in furniture and art pops against the otherwise white, airy scheme. But the entry and bedroom break away from this approach: Each features walls of bright, boldly patterned Farrow & Ball wallpaper. "Both spaces are beautiful," Cornelison says. "I especially wanted a yellow bedroom because winter can be so long and gray, and yellow is a warm, happy color."

The room's headboard, window coverings, and baskets add even more warmth. "I like natural textures," Cornelison says, "and they provide cohesiveness between the rooms."

Despite the small size of the bedroom, it had just enough space for a king-sized bed. "That's one of the reasons we liked this apartment—that we had the space for larger furniture," Ferreyra says. And there's still enough room for the couple's Tibetan terrier, Walter. "He's furry, but he's actually pretty small," Cornelison says. "He fits perfectly."

OPPOSITE: The breakfast area's art wall includes three prints by Brooklyn artist Jacqueline Schmidt of Screech Owl Designs, who Cornelison and Ferreyra met on a 2008 *Cottage Living* magazine shoot at the Michigan summer home Schmitt shares with her husband, George. **ABOVE:** The breakfast area's antique bentwood bench pulls up to a simple table and chandelier purchased at Ikea.



STONEHOUSE INC.

952-473-2221
WWW.STONEHOUSEDESIGNS.COM



The Photo Shoot

Kim Cornelison and Alfie Ferreyra work as a photo team for magazines including *Better Homes and Gardens*, *Country Home*, and *Midwest Living* as well as commercial clients as Target and Crate and Barrel. Shooting their own home was a treat, but also a bit of a challenge. "It's not often that you play the role of photographer and homeowner," Cornelison says. "Normally the homeowner is cleaning, ironing sheets, and so on, but here we had to do that as well as wear the photographer hat. But it was great to be able to shoot in pajamas and to have our friend [David Anger] here with us as the stylist. The activity didn't faze Walter. He pretty much slept through the whole thing."

OPPOSITE: Yellow Farrow & Ball wallpaper gives the bedroom—where Walter often naps—a cheery glow. It also complements the blue and white bed linens. ABOVE: Alfie Ferreyra and Kim Cornelison.

See our furnished Model Homes and Staffed Lobby



Elegant

Riverfront Condominiums & Main Street Charm

Available for Move-In Now.

Unparalleled views and gracious riverfront living is available for move-in now at Phoenix on the River. Live in luxury in the heart of a walkable neighborhood. Just across the river from the Guthrie Theatre on historic Main Street. Live beautifully.

Open Monday through Friday 12 to 4 pm and by appointment.

Fritz Kroll Edina Realty

Priced from \$400,000 to \$4 million. Located at the corner of Southeast Third Avenue and Southeast Second Street.

PHOENIX on the River

222 Southeast Second Street • Minneapolis, MN 55414
612.333.1511 • www.phoenixontheriver.com



ABOVE: The bedroom's Parsons desk doubles as a dressing table and work space for Cornelson. The mirror is from the Brimfield Antique Show in Massachusetts; the lamp is from Jonathan Adler. RIGHT: Simple linen panels and woven Roman shades dress the bedroom's windows. "The windows face south," Cornelson says, "so when the sun shines in, it's warm and cozy."



Kim Cornelson and Alfie Ferreyra's Favorite Places

Shops:

ANTHROPOLOGIE, 4999 France Ave. S., Mpls., 612-285-9164; The Shoppes at Arbor Lakes, Maple Grove, 763-416-1447, anthropologie.com

DANISH TEAK CLASSICS, 1500 NE Jackson St., Ste. 277, Mpls., 612-362-7870, danishteakclassics.com

HUNT & GATHER, 4944 Xerxes Ave. S., Mpls., 612-455-0250, huntandgatherantiques.com

I LIKE YOU, 4222 Nicollet Ave., Mpls., 612-827-9065, ilikeyouonline.com

LUNALUX, 1618 Harmon Pl., Mpls., 612-373-0526, lunalux.com

PATINA STORES, Five metro locations, including 5001 Bryant Ave. S., Mpls., 612-821-9315, patina stores.com

TANGLETOWN GARDENS, 5353 Nicollet Ave., Mpls., 612-822-4769, tangletoingardens.com

Restaurants:

BARBETTE, 1600 W. Lake St., Mpls., 612-827-5710, barbette.com

BLACKBIRD CAFÉ, 815 W. 50th St., Mpls., 612-823-4790, blackbirdmpls.com

CAFÉ AGRI, 4300 Bryant Ave. S., Mpls., 612-822-3101, cafeagri.com

CAFÉ ENA, 4601 Grand Ave. S., Mpls., 612-824-4441, cafeena.com

FRENCH MEADOW BAKERY & CAFÉ, 2610 Lyndale Ave. S., Mpls., 612-870-7855, frenchmeadow.com

GIGI'S CAFÉ, 822 W. 36th St., Mpls., 612-825-0818, gigisuptown.com

JAVA JACK'S COFFEE CAFÉ, 818 W. 46th St., Mpls., 612-825-2183

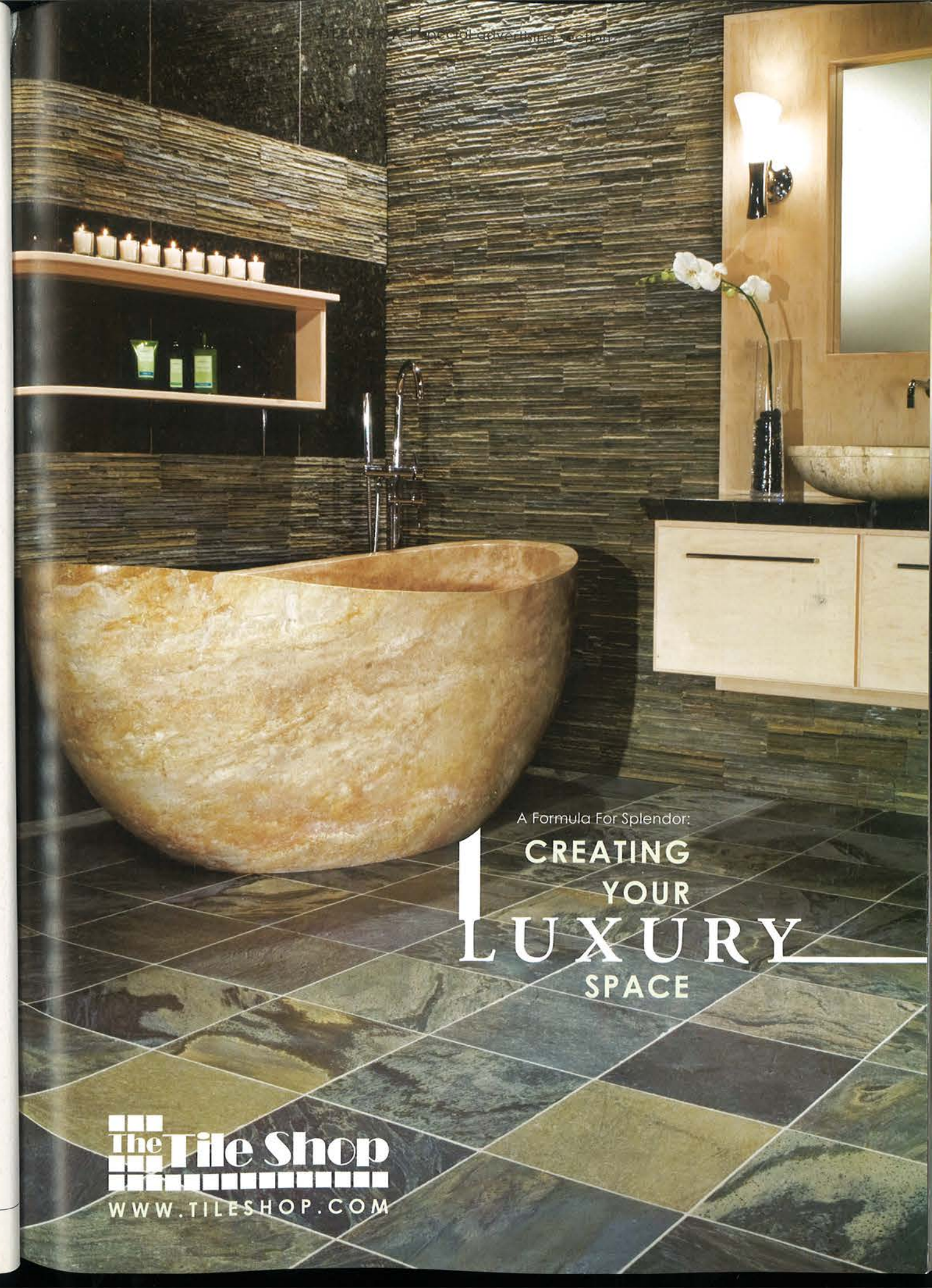
MODERN CAFÉ, 337 13th Ave. NE., Mpls., 612-378-9882, moderncafeminneapolis.com

SALSA A LA SALSA, 1420 Nicollet Ave., 612-813-1970, salsaalasalsa.com

SEA SALT EATERY (April-October), 4825 Minnehaha Ave., Mpls., 612-721-8990, seasalteatery.com

Inspiration:

GUTHRIE THEATER
LAKE HARRIET ROSE GARDEN
MINNEAPOLIS INSTITUTE OF ARTS
WALKER ART CENTER



A Formula For Splendor:

1 **CREATING
YOUR
LUXURY
SPACE**

The Tile Shop
WWW.TILESHOP.COM